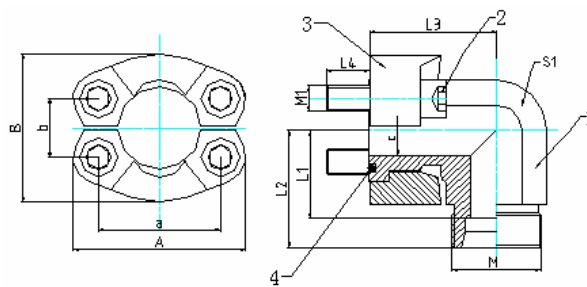


**KFN0802**

**Bulkhead Union Connection Code 61/3000Psi -Standard Pressure**

Part. No.	Flange Size Code 61	Flange Set P/N	ØOD D1	Max Working Pressure Bar	A	a	B	b	Metric Thread M	L1	L2	L3	L4	C	S1	S2	S6	M1	WT (g)
610M-L15-08	1/2	KSFM-08	L15	315	54	38.1	46	17.5	M22*15	29.0	44	36	11.5	12	24	27	5	M8	394
610M-L16-08	1/2	KSFM-08	S16	350	54	38.1	46	17.5	M24*1.5	29.5	48	36	11.5	12	24	30	6	M8	425
610M-L18-12	3/4	KSFM-12	L18	315	65	47.6	52	22.2	M26*1.5	31.5	48	42	15.5	15	30	32	8	M10	657
610M-L22-12	3/4	KSFM-12	L22	160	65	47.6	52	22.2	M30*2	33.5	50	42	15.5	19	30	36	8	M10	663
610M-S20-12	3/4	KSFM-12	S20	350	65	47.6	52	22.2	M30*2	32.5	54	42	15.5	16	30	36	8	M10	756
610M-S25-12	3/4	KSFM-12	S25	350	65	47.6	52	22.2	M36*2	33.0	57	42	15.5	17	30	46	8	M10	886
610M-L28-16	1	KSFM-16	L28	160	70	52.4	59	26.5	M36*2	36.5	53	45	13.5	24	36	41	8	M10	850
610M-S30-16	1	KSFM-16	S30	350	70	52.4	59	26.5	M42*2	36.5	63	45	13.5	24	36	50	8	M10	1064
610M-L35-20	1-1/4	KSFM-20	L35	160	79	58.7	73	30.2	M45*2	46.5	68	50	18.5	30	41	50	8	M10	1152
610M-S25-20	1-1/4	KSFM-20	S25	280	79	58.7	73	30.2	M36*2	43.0	67	50	18.5	20	41	46	8	M10	1348
610M-S30-20	1-1/4	KSFM-20	S30	280	79	58.7	73	30.2	M42*2	43.5	70	50	18.5	25	41	50	8	M10	1398
610M-S38-20	1-1/4	KSFM-20	S38	280	79	58.7	73	30.2	M52*2	43.0	74	50	18.5	28	46	60	8	M12	1527
610M-L35-20M12	1-1/4	KSFM-20M12	L35	160	79	58.7	73	30.2	M45*2	46.5	68	50	23.5	30	41	50	10	M12	1208
610M-S25-20M12	1-1/4	KSFM-20M12	S25	280	79	58.7	73	30.2	M36*2	43.0	67	50	23.5	20	41	46	10	M12	1406
610M-S30-20M12	1-1/4	KSFM-20M12	S30	280	79	58.7	73	30.2	M42*2	43.5	70	50	23.5	25	41	50	10	M12	1460
610M-S38-20M12	1-1/4	KSFM-20M12	S38	280	79	58.7	73	30.2	M52*2	43.0	74	50	23.5	28	46	60	10	M12	1585
610M-L42-24	1-1/2	KSFM-24	L42	160	94	69.9	83	35.7	M52*2	47.0	70	55	18.5	36	46	60	10	M12	1602
610M-S38-24	1-1/2	KSFM-24	S38	210	94	69.9	83	35.7	M52*2	48.0	79	55	18.5	32	46	60	10	M12	1951

K-with mounting kits; F-with split flanges, N-without nut and cutting ring. If nut and cutting ring request "N" should omitted.

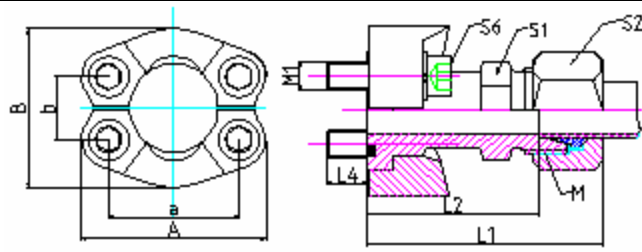


**KFN0802**

**Bulkhead Union Connection Code 62/6000Psi -High Pressure**

Part. No.	Flange Size Code 62	Flange Set P/N	ØOD D1	Max Working Pressure Bar	A	A	B	b	Metric Thread M	L1	L2	L3	L4	C	S1	S2	S6	M1	WT (g)
620M-S16-08	1/2	KSFXM-08	S16	315	54	38.1	46	17.5	M22*15	29.0	44	36	11.5	12	24	27	5	M8	394
620M-S16-12	3/4	KSFXM-12	S16	160	65	47.6	52	22.2	M30*2	33.5	50	42	15.5	19	30	36	8	M10	663
620M-S20-12	3/4	KSFXM-12	S20	350	65	47.6	52	22.2	M30*2	32.5	54	42	15.5	16	30	36	8	M10	756
620M-S25-12	3/4	KSFXM-12	S25	350	65	47.6	52	22.2	M36*2	33.0	57	42	15.5	17	30	46	8	M10	886
620M-S25-16	1	KSFXM-16	S25	160	70	52.4	59	26.5	M36*2	36.5	53	45	13.5	24	36	41	8	M10	850
620M-S30-16	1	KSFXM-16	S30	350	70	52.4	59	26.5	M42*2	36.5	63	45	13.5	24	36	50	8	M10	1064
620M-S30-20	1-1/4	KSFXM-20	S30	280	79	58.7	73	30.2	M42*2	43.5	70	50	18.5	25	41	50	8	M10	1398
620M-S38-20	1-1/4	KSFXM-20	S38	280	79	58.7	73	30.2	M52*2	43.0	74	50	18.5	28	46	60	8	M12	1527
620M-S30-20M12	1-1/4	KSFXM-20	S30	280	79	58.7	73	30.2	M42*2	43.5	70	50	23.5	25	41	50	10	M12	1460
620M-S38-20M12	1-1/4	KSFXM-20	S38	280	79	58.7	73	30.2	M52*2	43.0	74	50	23.5	28	46	60	10	M12	1585
620M-S38-24	1-1/2	KSFXM-24	S38	210	94	69.9	83	35.7	M52*2	48.0	79	55	18.5	32	46	60	10	M12	1951

K-with mounting kits; F-with split flanges, N-without nut and cutting ring. If nut and cutting ring request "N" should omitted.

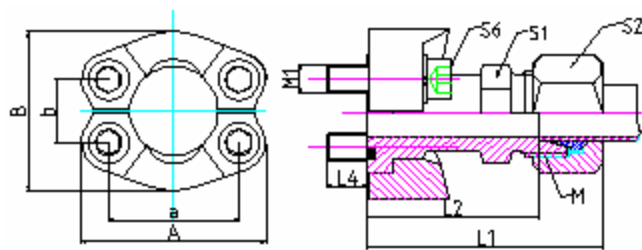
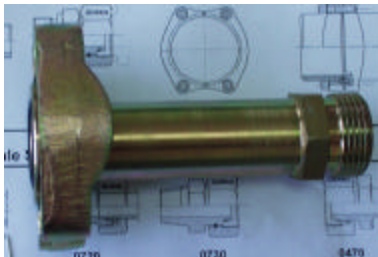


## KF0801

### SAE Flanged Connection Code 61/3000Psi –Standard Pressure

Part. No.	Flange Size	Flange Set P/N	Pipe ?OD	Max Working Pressure Bar	A	a	B	b	Metric Thread G1/G2	L1	L2	L4	S1	S2	S6	d1	M1	WT (g)
610M-L15-08	1/2	KSFM-08	L15	315	54	38.1	46	17.5	M22*1.5	56	41.0	11.5	24	27	6	12	M8	359
610M-S16-08	1/2	KSFM-08	S16	350	54	38.1	46	17.5	M24*1.5	60	41.5	11.5	24	30	6	12	M8	396
610M-L18-12	3/4	KSFM-12	L18	315	65	47.6	52	22.2	M26*1.5	62	45.5	15.5	30	32	8	15	M10	585
610M-L22-12	3/4	KSFM-12	L22	160	65	47.6	52	22.2	M30*2	62	45.5	15.5	30	36	8	19	M10	585
610M-S20-12	3/4	KSFM-12	S20	350	65	47.6	52	22.2	M30*2	68	46.5	15.5	30	36	8	16	M10	658
610M-S25-12	3/4	KSFM-12	S25	350	65	47.6	52	22.2	M36*2	69	45.0	15.5	30	46	8	17	M10	778
610M-L28-16	1	KSFM-16	L28	160	70	52.4	59	26.2	M36*2	63	46.5	13.5	36	41	8	24	M10	726
610M-S30-16	1	KSFM-16	S30	350	70	52.4	59	26.2	M42*2	76	49.5	13.5	36	50	8	24	M10	940
610M-L35-20	1-1/4	KSFM-20	L35	160	79	58.7	73	30.2	M45*2	69	47.5	18.5	41	50	8	30	M10	958
610M-S25-20	1-1/4	KSFM-20	S25	280	79	58.7	73	30.2	M36*2	72	48.0	18.5	41	46	8	20	M10	1114
610M-S30-20	1-1/4	KSFM-20	S30	280	79	58.7	73	30.2	M42*2	75	48.5	18.5	41	50	8	25	M10	1134
610M-S38-20	1-1/4	KSFM-20	S38	280	79	58.7	73	30.2	M52*2	81	50.0	18.5	46	60	8	28	M10	1356
610M-L35-20M12	1-1/4	KSFM-20	L35	160	79	58.7	73	30.2	M45*2	69	47.5	23.5	41	50	10	30	M12	1015
610M-S25-20M12	1-1/4	KSFM-20	S25	280	79	58.7	73	30.2	M36*2	72	48.0	23.5	41	46	10	20	M12	1172
610M-S30-20M12	1-1/4	KSFM-20	S30	280	79	58.7	73	30.2	M42*2	75	48.5	23.5	41	50	10	25	M12	1197
610M-S38-20M12	1-1/4	KSFM-20	S38	280	79	58.7	73	30.2	M52*2	81	50.0	23.5	46	60	10	28	M12	1414
610M-L42-24	1-1/2	KSFM-24	L42	160	94	69.9	83	35.7	M52*2	76	53.0	18.5	46	60	10	36	M12	1360
610M-S38-24	1-1/2	KSFM-24	S38	210	94	69.9	83	35.7	M52*2	85	54.0	18.5	46	60	10	32	M12	1632

K-with mounting kits; F-with split flanges, N-without nut and cutting ring. If nut and cutting ring request "N" should omitted.



## KF0801

### SAE Flanged Connection Code 62/6000Psi –Standard Pressure

Part. No.	Flange Size	Flange Set P/N	Pipe ØOD	Max Working Pressure Bar	A	a	B	b	Metric Thread G1/G2	L1	L2	L4	S1	S2	S6	d1	M1	WT (g)
620M-S16-08	1/2	KSFXM-08	S16	350	56	40.5	47	18.2	M24*1.5	63	44.5	13.5	24	30	6	12	M8	466
620M-S16-12	3/4	KSFXM-12	S16	315	71	50.8	60	23.8	M24*1.5	69	50.5	15.5	30	30	8	12	M10	791
620M-S20-12	3/4	KSFXM-12	S20	160	71	50.8	60	23.8	M30*2	72	50.5	15.5	30	36	8	16	M10	856
620M-S25-12	3/4	KSFXM-12	S25	350	71	50.8	60	23.8	M36*2	75	51.0	15.5	30	46	8	17	M10	972
620M-S25-16	1	KSFXM-16	S25	160	81	57.2	70	27.8	M36*2	84	60.0	20.5	36	46	10	20	M12	1418
620M-S30-16	1	KSFXM-16	S30	350	81	57.2	70	27.8	M42*2	87	60.5	20.5	36	50	10	24	M12	1403
620M-L35-20M12	1-1/4	KSFXM-20	L35	160	95	66.7	77	31.8	M42*2	92	65.5	17.5	41	50	10	25	M12	1954
620M-S25-20M12	1-1/4	KSFXM-20	S25	280	95	66.7	77	31.8	M52*2	98	67.0	17.5	46	60	10	30	M12	2159
620M-S30-20	1-1/4	KSFXM-20	S30	280	95	66.7	77	31.8	M42*2	92	65.5	22.5	41	50	12	25	M14	1904
620M-S38-20	1-1/4	KSFXM-20	S38	280	95	66.7	77	31.8	M52*2	98	67.0	22.5	46	60	12	30	M14	2104
620M-S38-20	1-1/2	KSFXM-24	S38	210	113	79.4	95	36.5	M52*2	104	73.0	24.5	46	60	14	30	M16	3057

K-with mounting kits; F-with split flanges, N-without nut and cutting ring. If nut and cutting ring request "N" should omitted.