

SAE J518 Split Flanges/Captive Flanges

SAE J518 Split Flanges/Captive Flanges Code 61 Split Flanges SAE Pattern

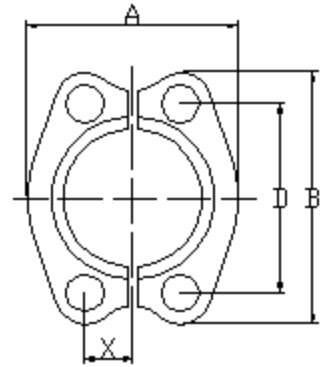
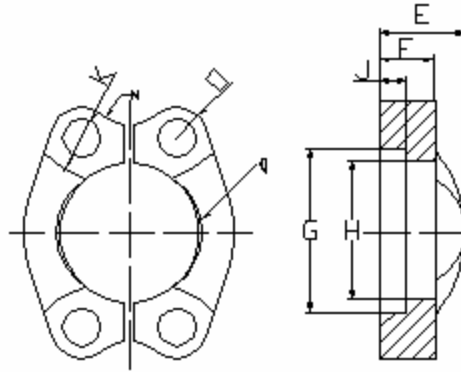
Part No. DRILL	SIZE	A	B	C	D	E	F	G	H	J	K	Mounting Kiits			WT
												O-RIN G Buna.N	BOLT HHCS	LW	
SF-08 SFM-08	1/2	0.86	2.12	0.31	1.500	0.75	0.50	1.219	0.955	0.245	0.344 0.354	2210	31125 M8X30	L-31	0.15
SF-12 SFM-12	3/4	0.98	2.56	0.40	1.875	0.88	0.56	1.531	1.265	0.245	0.406 0.433	2214	38125 M10X30	L-38	0.20
SF-16 SFM-16	1	1.11	2.82	0.48	2.062	0.94	0.62	1.781	1.515	0.295	0.406 0.433	2219	38125 M10X30	L-38	0.25
SF-20 SFM-20	1-1/4	1.39	3.12	0.56	2.312	0.88	0.56	2.031	1.720	0.295	0.469 0.433	2222	44150 M10X40	L-44	0.35
SF-24 SFM-24	1-1/2	1.58	3.69	0.67	2.750	1.00	0.62	2.406	2.000	0.295	0.531	2225	50150 M12X40	L-50	0.50
SF-32 SFM-32	2	1.86	4.00	0.81	3.062	1.03	0.62	2.844	2.470	0.355	0.531	2228	50150 M12X40	L-50	0.60
SF-40 SFM-40	2-1/2	2.09	4.50	0.96	3.500	1.50	0.75	3.344	2.950	0.355	0.531	2232	50175 M2X45	L-50	0.80
SF-48 SFM-48	3	2.53	5.31	1.18	4.188	1.62	0.88	4.031	3.580	0.355	0.656 0.688	2237	63175 M16X45	L-63	1.40
SF-56 SFM-56	3-1/2	2.70	6.00	1.34	4.750	1.12	0.88	4.531	4.030	0.422	0.656 0.688	2241	63200 M16X50	L-63	1.65
SF-64 SFM-64	4	2.95	6.38	1.49	5.125	1.38	1.00	5.031	4.530	0.422	0.656 0.688	2245	63200 M116X50	L-63	1.85

Code 62 Split Flanges

SAE Pattern

Part No. DRILL	SIZE	A	B	D	E	F	G	H	J	K	Mounting Kiits			WT	
											O-RIN G Buna.N	BOLT HHCS	LW		
SFX-8 SFXM-8	1/2	0.94	2.22	0.32	1.594	0.88	0.62	1.281	0.97	0.285	0.344 0.354	2210	31125 M8X30	L-31	0.20
SFX-012 SFXM-12	3/4	1.14	2.81	0.43	2.000	1.12	0.75	1.656	1.28	0.325	0.406 0.433	2214	38150 M10X40	L-38	0.40
SFX-16 SFXM-16	1	1.33	3.19	0.51	2.250	1.31	0.94	1.906	1.53	0.355	0.469 0.531	2219	44175 M12X45	L-44	0.60
SFX-20 SFXM-20	1-1/4	1.48	3.75	0.59	2.625	1.50	1.06	2.156	1.75	0.385	0.531 0.610	2222	50175 M14X50	L-50	0.85
SFX-24 SFXM-24	1-1/2	1.83	4.44	0.68	3.125	1.69	1.19	2.531	2.03	0.475	0.656 0.688	2225	63225 M16X55	L-63	1.60
SFX-32 SFXM-32	2	2.20	5.25	0.84	3.812	2.06	1.44	3.156	2.66	0.475	0.781 0.866	2228	75275 M20X70	L-75	2.25
SFX-40 SFXM-40	2-1/2	2.96	3.55	1.15	2.44	1.77	1.78	4.290	3.54	0.80	---	2232	---	L-100	4.60
SFX-48 SFXM-48	3	3.90	4.53	1.41	3.00	1.77	1.78	5.210	4.53	0.80	---	2237	---	L-125	9.50

SAE J518 Split Flanges/Captive Flanges



Code 61 Captive Flanges

SAE Pattern

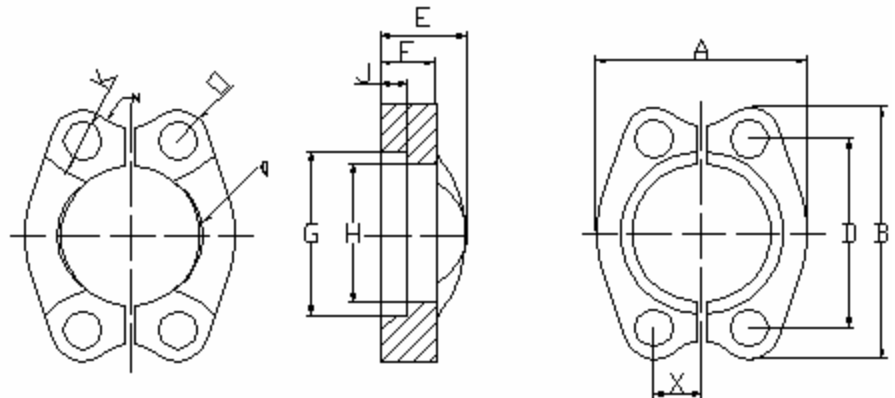
Part No. DRILL	SIZE	A	B	X	D	E	F	G	H	J	K	Mounting Kiits			WT
												O-RIN G Buna.N	BOLT HHCS	LW	
SFW-08	1/2	1.81	2.12	0.344	1.500	0.75	0.50	1.219	0.955	0.245	0.344	2210	31125	L-31	0.30
SFWM-08													M8X30		
SFW-12	3/4	2.06	2.56	0.438	1.875	0.88	0.56	1.531	1.265	0.245	0.406	2214	38125	L-38	0.40
SFWM-12													M10X30		
SFW-16	1	2.31	2.82	0.515	2.062	0.94	0.62	1.781	1.515	0.295	0.406	2219	38125	L-38	0.50
SFWM-16													M10X30		
SFW-20	1-1/4	2.88	3.12	0.594	2.312	0.88	0.56	2.031	1.720	0.295	0.469	2222	44150	L-44	0.70
SFWM-20													M10X40		
SFW-24	1-1/2	3.25	3.69	0.703	2.750	1.00	0.62	2.406	2.000	0.295	0.531	2225	50150	L-50	1.00
SFWM-24													M12X40		
SFW-32	2	3.81	4.00	0.844	3.062	1.03	0.62	2.844	2.470	0.355	0.531	2228	50150	L-50	1.20
SFWM-32													M12X40		
SFW-40	2-1/2	4.28	4.50	1.000	3.500	1.50	0.75	3.344	2.950	0.355	0.531	2232	50175	L-50	1.60
SFWM-40													M12X45		
SFW-48	3	5.16	5.31	1.219	4.188	1.62	0.88	4.031	3.580	0.355	0.656	2237	63175	L-63	2.80
SFWM-48													M16X45		
SFW-56	3-1/2	5.5	6.00	1.375	4.750	1.12	0.88	4.531	4.030	0.422	0.656	2241	63200	L-63	3.30
SFWM-56													M16X50		
SFW-64	4	6.00	6.38	1.531	5.125	1.38	1.00	5.031	4.530	0.422	0.656	2245	63200	L-63	3.70
SFWM-64													M16X50		

Code 62 Captive Flanges

SAE Pattern

Part No. DRILL	SIZE	A	B	D	E	F	G	H	J	K	Mounting Kiits			WT	
											O-RIN G Buna.N	BOLT HHCS	LW		
SFXW-08	1/2	1.86	2.22	0.359	1.594	0.88	0.62	1.281	0.97	0.285	0.344	2210	31125	L-31	0.40
SFXWM-08													M8X30		
SFXW-012	3/4	2.38	2.81	0.469	2.000	1.12	0.75	1.656	1.28	0.325	0.406	2214	38150	L-38	0.80
SFXWM-12													M10X40		
SFXW-16	1	2.75	3.19	0.547	2.250	1.31	0.94	1.906	1.53	0.355	0.469	2219	44175	L-44	1.20
SFXWM-16													M12X45		
SFXW-20	1-1/4	3.06	3.75	0.625	2.625	1.50	1.06	2.156	1.75	0.385	0.531	2222	50175	L-50	1.70
SFXWM-20													M14X45		
SFXW-24	1-1/2	3.75	4.44	0.719	3.125	1.69	1.19	2.531	2.03	0.475	0.656	2225	63225	L-63	3.20
SFXWM-24													M16X55		
SFXW-32	2	4.50	5.25	0.875	3.812	2.06	1.44	3.156	2.66	0.475	0.781	2228	75275	L-75	4.50
SFXWM-32													M20X70		

SAE J518 Split Flanges/Captive Flanges



Code 61 Captive Flanges

SAE Pattern

Part No.	SIZE	A	B	X	D	E	F	G	H	J	K UNC-2B	WT
TAPPED												
SFTW-08	1/2	1.81	2.12	0.344	1.500	0.75	0.50	1.219	0.955	0.245	5/16-18	0.3
SFTWM-08											M8X1.25	
SFTW-12	3/4	2.06	2.56	0.438	1.875	0.88	0.56	1.531	1.265	0.245	3/8-16	0.4
SFTWM-12											M10X1.5	
SFTW-16	1	2.31	2.82	0.515	2.062	0.94	0.62	1.781	1.515	0.295	3/8-16	0.5
SFTWM-16											M10X1.5	
SFTW-20	1-1/4	2.88	3.12	0.594	2.312	0.88	0.56	2.031	1.720	0.295	3/8-16	0.7
SFTWM-20											M10X1.5	
SFTW-24	1-1/2	3.25	3.69	0.703	2.750	1.00	0.62	2.406	2.000	0.295	1/2-13	1.0
SFTWM-24											M12X1.75	
SFTW-32	2	3.81	4.00	0.844	3.062	1.03	0.62	2.844	2.470	0.355	1/2-13X1.75	1.2
SFTWM-32											M12X1.75	
SFTW-40	2-1/2	4.28	4.50	1.000	3.500	1.50	0.75	3.344	2.950	0.355	1/2-13	1.6
SFTWM-40											M12X1.75	
SFTW-48	3	5.16	5.31	1.219	4.188	1.62	0.88	4.031	3.580	0.355	5/8-11	2.8
SFTWM-48											M16X2	
SFTW-56	3-1/2	5.50	6.00	1.375	4.750	1.12	0.88	4.531	4.030	0.422	5/8-11	3.3
SFTWM-56											M16X2	
SFTW-64	4	6.00	6.38	1.531	5.125	1.38	1.00	5.031	4.530	0.422	5/8-11	3.7
SFTWM-64											M16X2	

Code 62 Captive Flanges

SAE Pattern

Part No.	SIZE	A	B	C	D	E	F	G	H	J	K UNC-2B MM	WT
TAPPED												
SFXTW-8	1/2	1.86	2.22	0.359	1.594	0.88	0.62	1.281	0.97	0.285	5/16-18	0.4
SFXTW-8-M8											M8X1.25	
SFXTW-12	3/4	2.38	2.81	0.469	2.000	1.12	0.75	1.656	1.28	0.325	3/8-16	0.8
SFXTW-12-M10											M10X1.5	
SFXTW-16	1	2.75	3.19	0.547	2.250	1.31	0.94	1.906	1.53	0.355	7/16-14	1.2
SFXTW-16-M12											M12X1.75	
SFXTW-20	1-1/4	3.06	3.75	0.625	2.625	1.50	1.06	2.156	1.75	0.385	1/2-13	1.7
SFXTW-20-M14											M14X2	
SFXTW-24	1-1/2	3.75	4.44	0.719	3.125	1.69	1.19	2.531	2.03	0.475	5/8-11	3.0
SFXTW-24-M16											M16X2	
SFXTW-32	2	4.50	5.25	0.875	3.812	2.06	1.44	3.156	2.66	0.475	3/4-10	4.5
SFXTW-32-M20											M20X2.5	